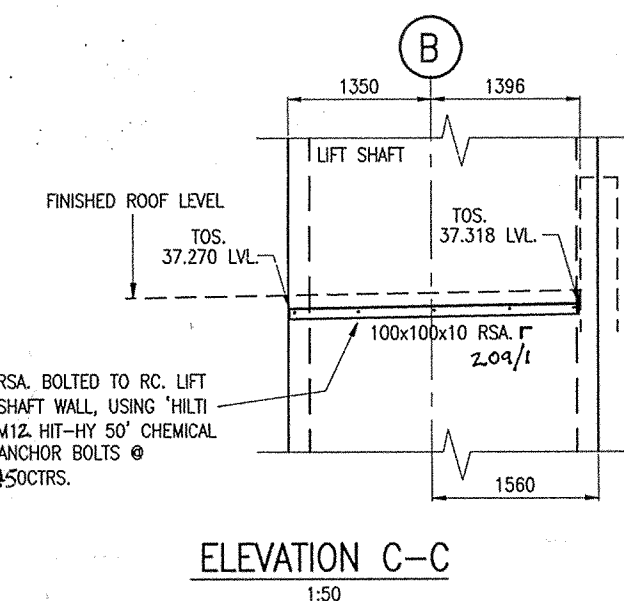


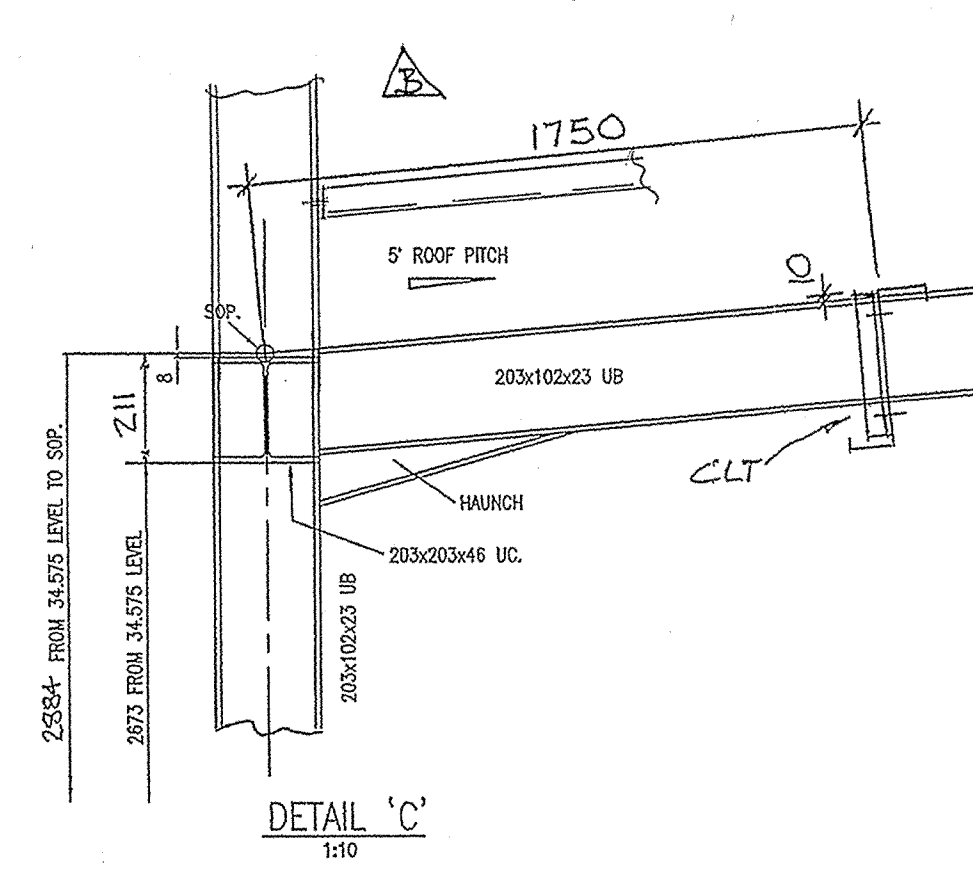
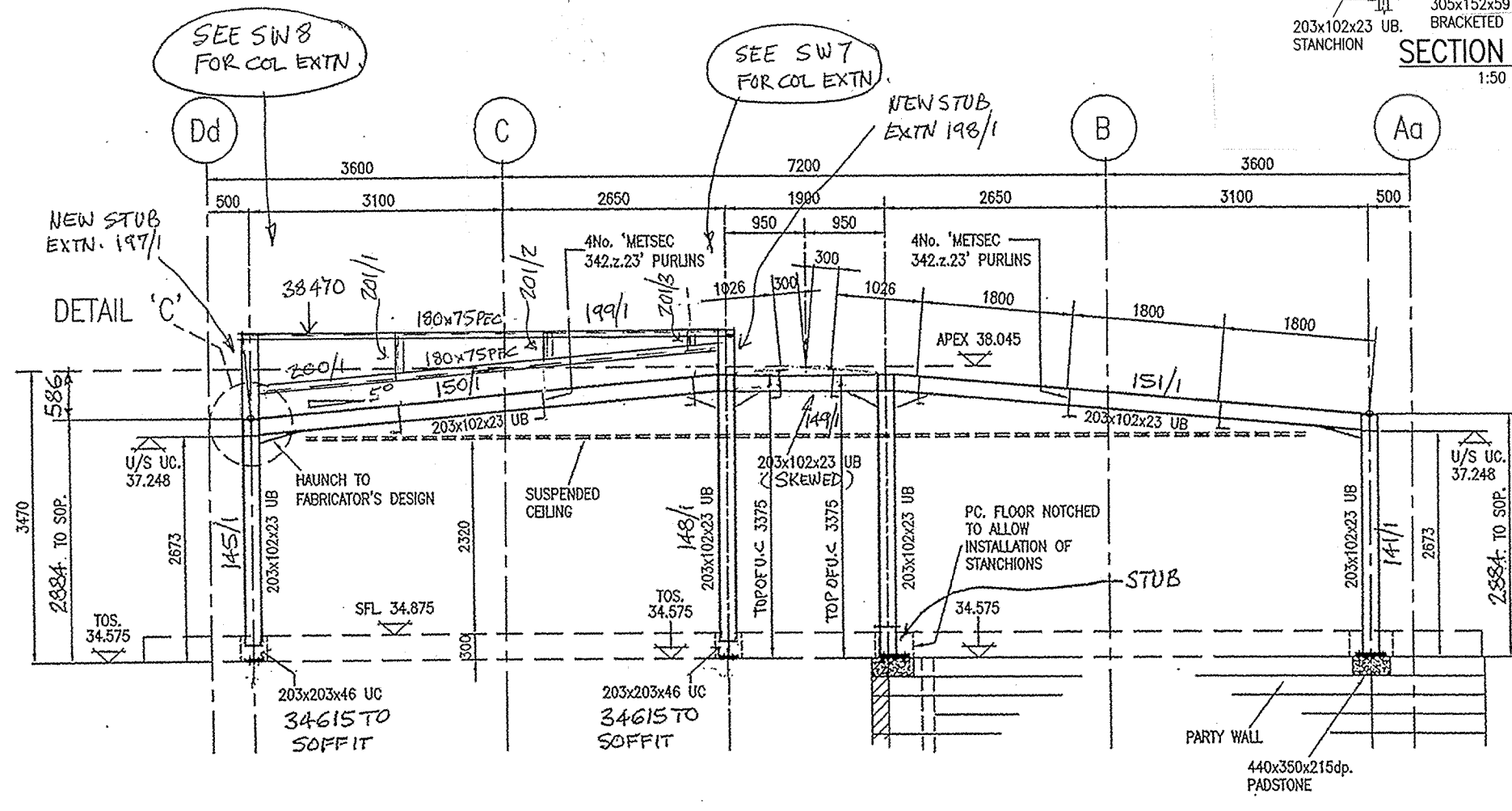
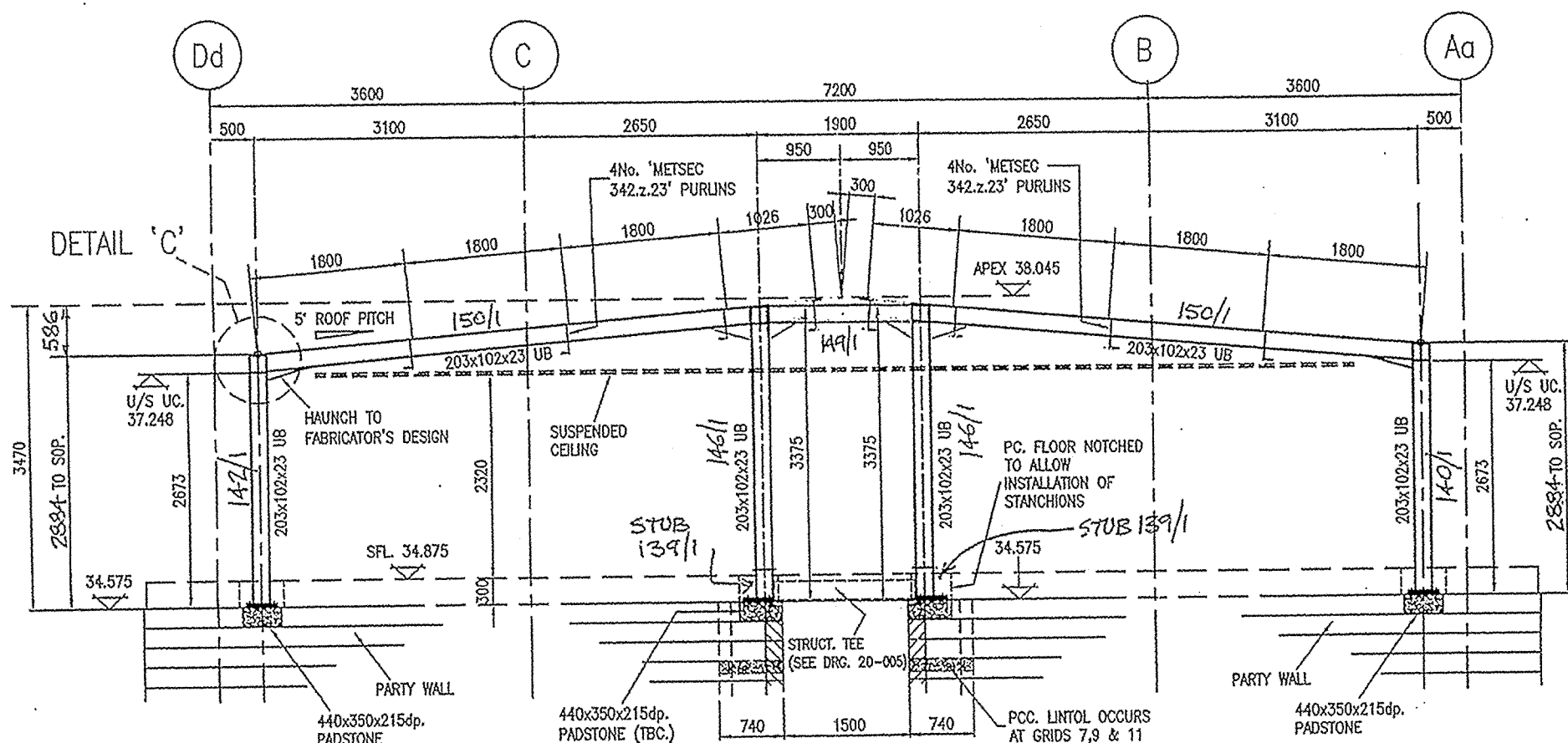
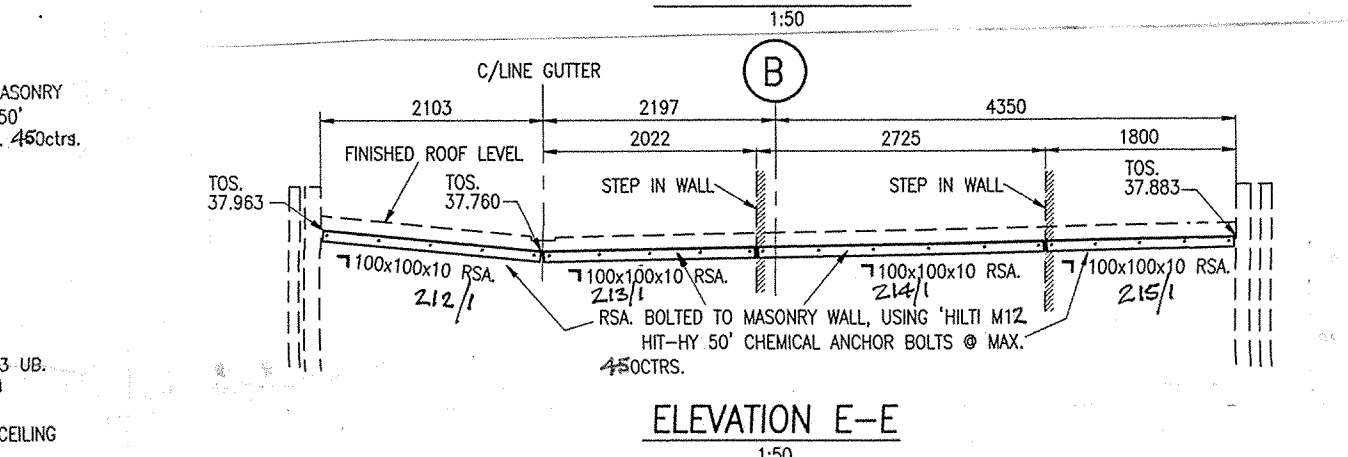
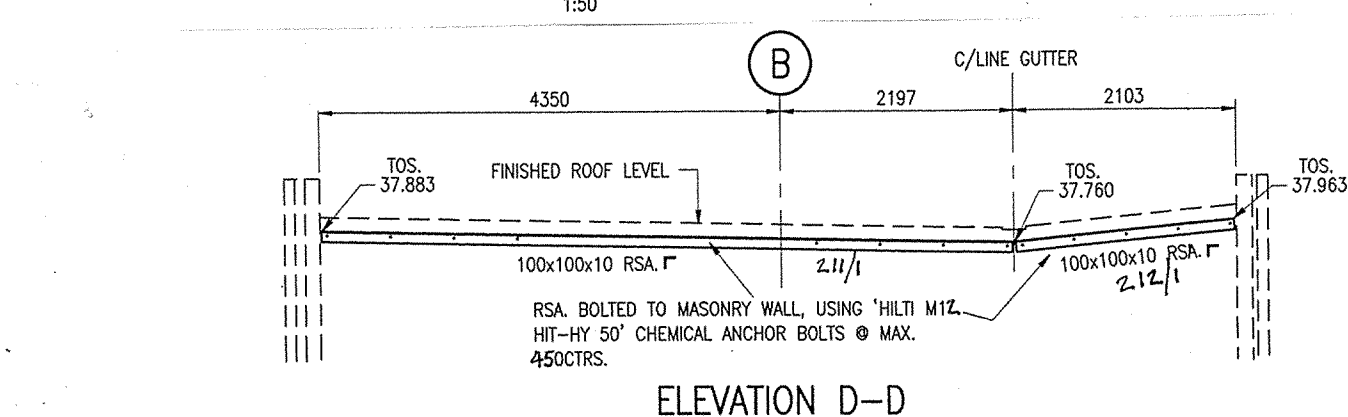
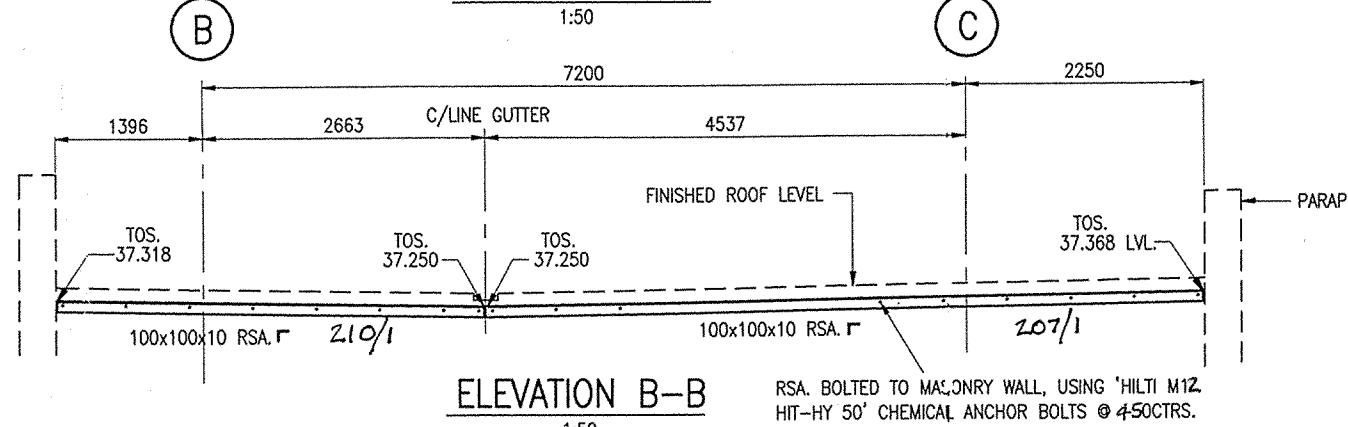
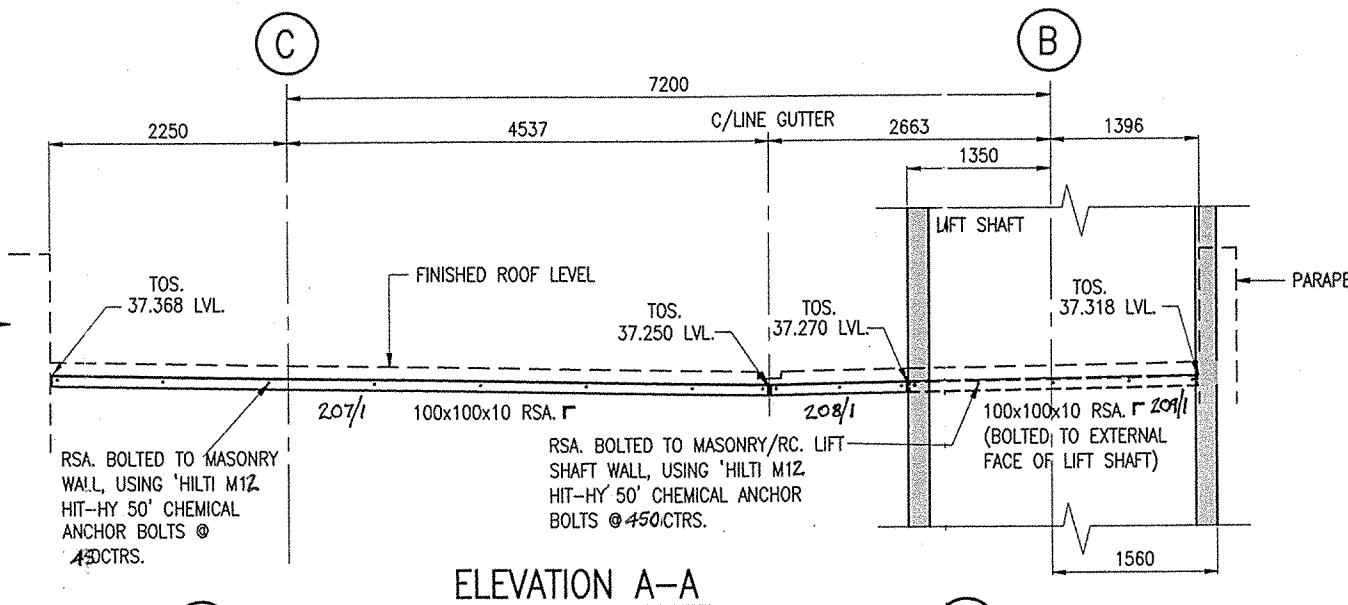
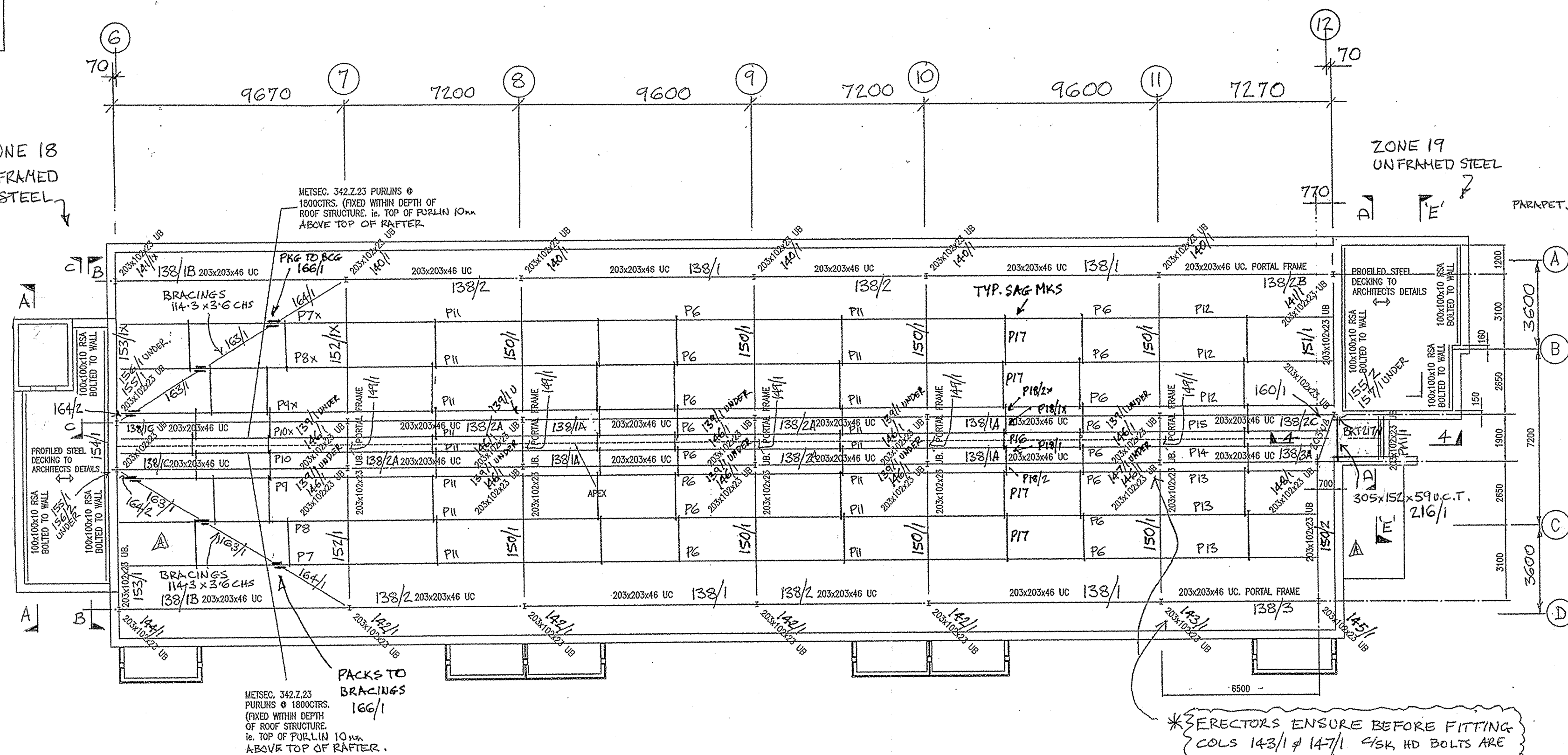
ALL SHS, RHS & CHS SECTIONS ARE GRADE 50 UNLESS NOTED OTHERWISE.

ANY/ALL SITE WELDING TO L.COOPER STEEL STRUCTURE MUST BE DONE USING LOW HYDROGEN WELDING RODS (SUITABLY DRIED IN AN OVEN) OR SIMILAR



ZONE 18
UNFRAMED
STEEL

ZONE 19
UNFRAMED
STEEL



COLD ROLLED PURLINS ZONE 17
STEELWORK TO ZONE 16.

<p>STRUCTURAL STEELWORK ENGINEERS BALM ROAD, HUNSLLET, LEEDS TEL: 0113 2705441 FAX: 0113 276 0659 EMAIL: mark@leonardcooperltd.co.uk WEB SITE: http://www.alphaweb.co.uk/leonardcooperltd</p>	<p>CONTRACT QUARRYBY CONSTRUCTION WAKEFIELD WATERFRONT BLDG. 20 CONSULTING ENG. ARCHITECT</p>	<p>REVISION A END BAYS EXTENDED 70mm. MARKS ADDED. MINOR REVS TO ENG. INSTRUCTIONS REVISED 21/5/07</p> <p>REVISION B PARAPET STEEL ADDED ON GRID 12 REVISED 10/7/07</p> <p>REVISION C SECT. A-A TO E-E AND SECT. A-A ADDED IN ALL ANGLES ADDED TO WALLS, PHV11 & 20/11 ADDED. REVISED 31/7/07</p> <p>REVISION D</p> <p>REVISION E</p>	<p>SHOP BOLTS FINISH : 4.6 NO. TYPE DIA L'TH</p>	<p>SHOP NOTES: (U.N.O.) ALL WELDS 6MM CONT. FILLET WELDS ALL STEEL TO BS EN 10025 GRADE S275 PAINT IDENTIFICATION MARKS MUST BE PLACED ON A) TOP RIGHT HAND END OF BEAMS/MEMBERS OR B) COLUMN WHERE INDICATED THUS: [MARK]</p>	<p>FABRICATION TOLERANCES TO BS5950 PART 2 (U.N.O.) (BROWN ON L.C. PROCEDURE ME5-23-00) SCALE DRAWN BY CHECKED BY</p>	<p>TITLE GEN. ARR. OF ROOF BETWEEN GRIDS 6 TO 13. PLAN & ELEVATIONS. RELEASED FOR FABRICATION SIGNED: 3/5/07 DATE: 3/5/07 DRG. No. 07/18/008 'c'</p>
--	---	---	--	--	---	--